

RESTORATIVE SOLUTION

Your complete system for QUALITY RESTORATIONS

Ultradent's Restorative Solution brings together some of our most-loved products to help you create long-lasting, beautiful restorations.



LEARN MORE ABOUT QUALITY RESTORATIONS



6-06, 2 Rio Office Tower Persiaran Rio, Bandar Puteri 47100 Puchong, Selangor, Malaysia
© 2026 Ultradent Products, Inc. All Rights Reserved.

+6 03 8600 8050 — ultradent.com

Our culture shows in our products, the services we provide, and the influence we have to improve oral health globally. We want to bring smiles to all human beings.



Why is FORMA™ composite the ideal choice for both anterior and posterior restorations?

FORMA™ composite is available in a full range of shades with ideal translucency, opacity, and fluorescence when compared with the natural characteristics of the tooth. FORMA™ composite's excellent optical properties enable clinicians to reach the ideal balance between aesthetics of direct restorations and dental substrates with the use of only one body color (OneStepColor) or through a combination of dentine, enamel, and effect shades for more specific procedures.

A zirconia nano-hybrid formula gives FORMA™ composite excellent mechanical properties, high strength, and excellent working consistency. It is easy to sculpt and simple to polish, offering beautiful final aesthetics.

FORMA™ composite shades and kits



Dentine	Body	Enamel	Effect Colors
● A1D	● A1B	● A1E	● Incisal
● A2D	● A2B	● A2E	● Transparent
● A3D	● A3B	● A3E	● Opaquer
	● A3.5B	● A3.5E	
	● A4B	● A4E	
	● B1B	● B1E	
	● B2B	● B2E	
	● C1B	● C2E	
	● C2B		
Bleach Shades	● BL1		
● WD	● BL2		
	● WB	● WE	
	● XWB	● XWE	

FORMA™ Kits



4281-P2 - FORMA™ KIT - BODY SHADES

- 1 x A1B Syringe 4 g
- 2 x A2B Syringe 4 g
- 1 x A3B Syringe 4 g
- 1 x A3.5B Syringe 4 g



42812-P2 - FORMA™ KIT - BLEACH SHADES

- 1 x BL1 Syringe 4 g
- 1 x BL2 Syringe 4 g
- 1 x WE Syringe 4 g
- 1 x WD Syringe 4 g



42813-P2 - FORMA™ KIT - EVERYDAY SHADES

- 1 x A1B Syringe 4 g
- 1 x A2B Syringe 4 g
- 1 x A3B Syringe 4 g
- 1 x A2E Syringe 4 g
- 1 x Opaquer Syringe 4 g



FORMA™ Refill - 1 x 4 g syringe



FORMA™

ZIRCONIA NANO-HYBRID COMPOSITE



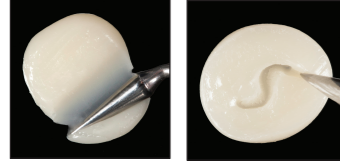
OneStepColor

- Zirconia Nano-Hybrid Composite
- Natural Fluorescence
- Simple Handling and Polishability

WHERE STRENGTH MEETS SIMPLICITY.

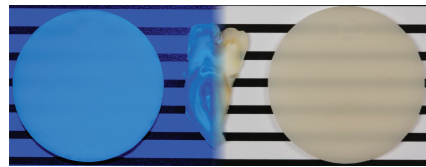
FORMA™ composite offers natural tooth color with just one body shade (OneStepColor) or for restorations that require layering. Besides its excellent mechanical and optical properties, FORMA™ composite offers a complete and intuitive shade system with Body, Dentine, and Enamel shades—making FORMA™ composite the ideal option for both anterior and posterior applications.

Ideal Handling Properties



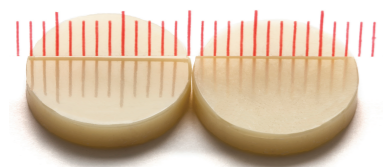
- Smooth and easy to sculpt
- Does not stick to instruments
- Won't slump out of place
- Ample working time

Natural Fluorescence



- Ideal balance between translucency and opacity
- Fluorescence similar to natural teeth

High Gloss



Initial appearance and after 10,000 brushing cycles

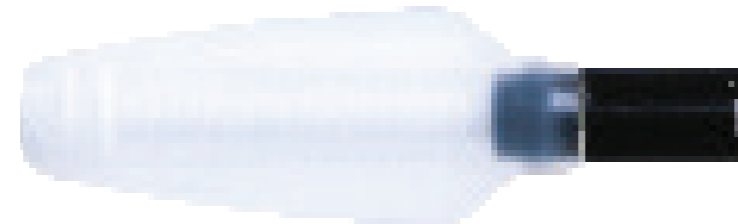
- Simple to polish
- Beautiful aesthetics
- High polish retention

Versatility:

Anterior Restorations : FORMA™ composite offers the ideal balance of translucency between enamel and dentine, efficiently providing the same aesthetic results in just a few layers that other composites provide with long layering procedures. It is also smooth and easy to sculpt.

Posterior Restorations : FORMA™ composite has a larger filler load and exhibits excellent mechanical properties, giving it the strength necessary for posterior restorations.

FORMA™ composite can also be used for indirect restorations of veneers, inlays, and onlays.



Unique and ergonomic syringe design with a smooth contoured handle and barrel to allow for easy cleaning while still being easy to grip.

Total control with just one hand!

The lid is attached to the body of the syringe for simple opening and closing and the wide handle allows for easy, one-hand handling.



KleenSleeve™ is an intelligent inner lining that protects the composite in the tube.

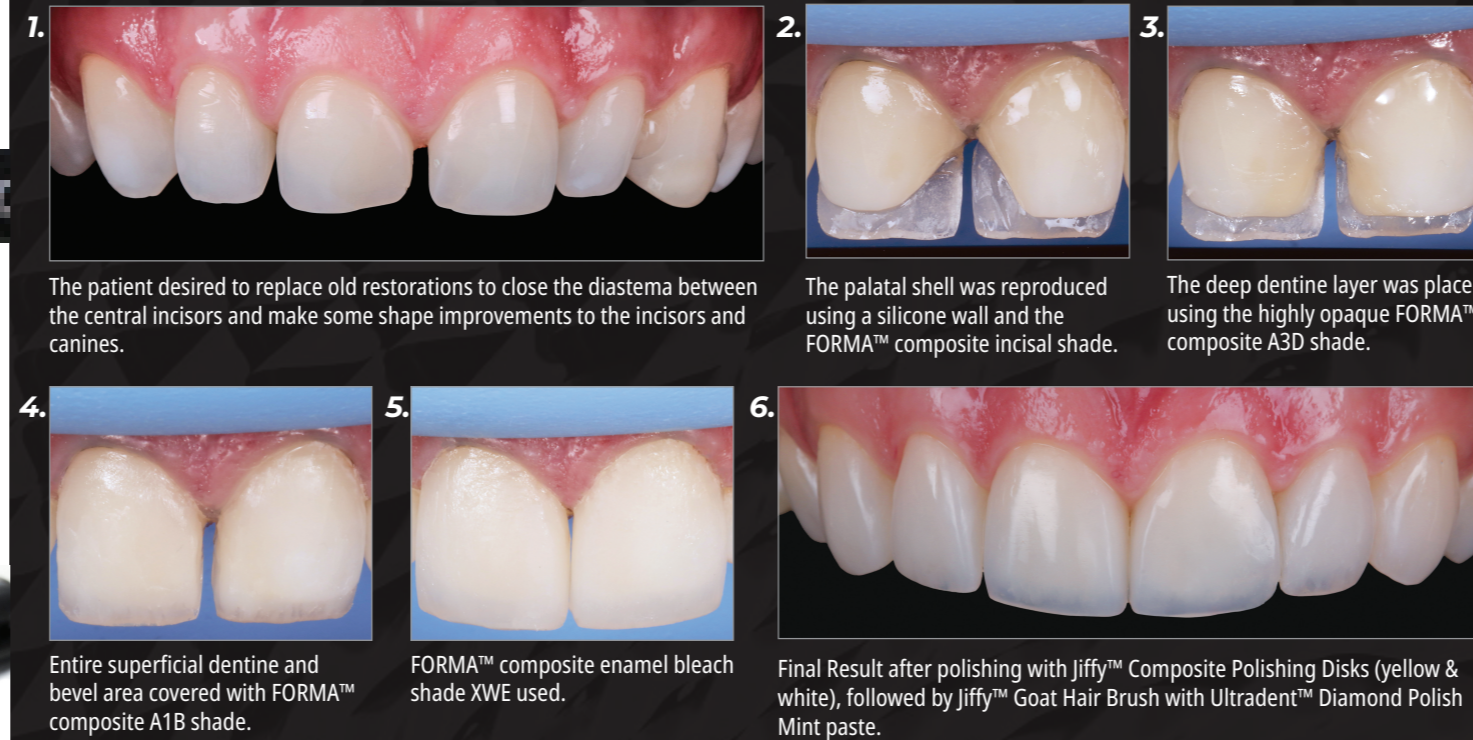
Technical Overview

	Body Shade
Volumetric Shrinkage	1.2%
Compressive Strength	451.62 (MPa)
Hardness	79.9 (HK)
Flexural Strength	159.37 (MPa)
Flexural Modulus	14.32 (GPa)
Radiopacity	2.63 (mm-Al)
Depth of Cure	2.89 (mm)
% Fill by Volume	65%



DR. RAFAEL CALIXTO

Diastema Closure



The patient desired to replace old restorations to close the diastema between the central incisors and make some shape improvements to the incisors and canines.

The palatal shell was reproduced using a silicone wall and the FORMA™ composite incisal shade.

The deep dentine layer was placed using the highly opaque FORMA™ composite A3D shade.

Entire superficial dentine and bevel area covered with FORMA™ composite A1B shade.

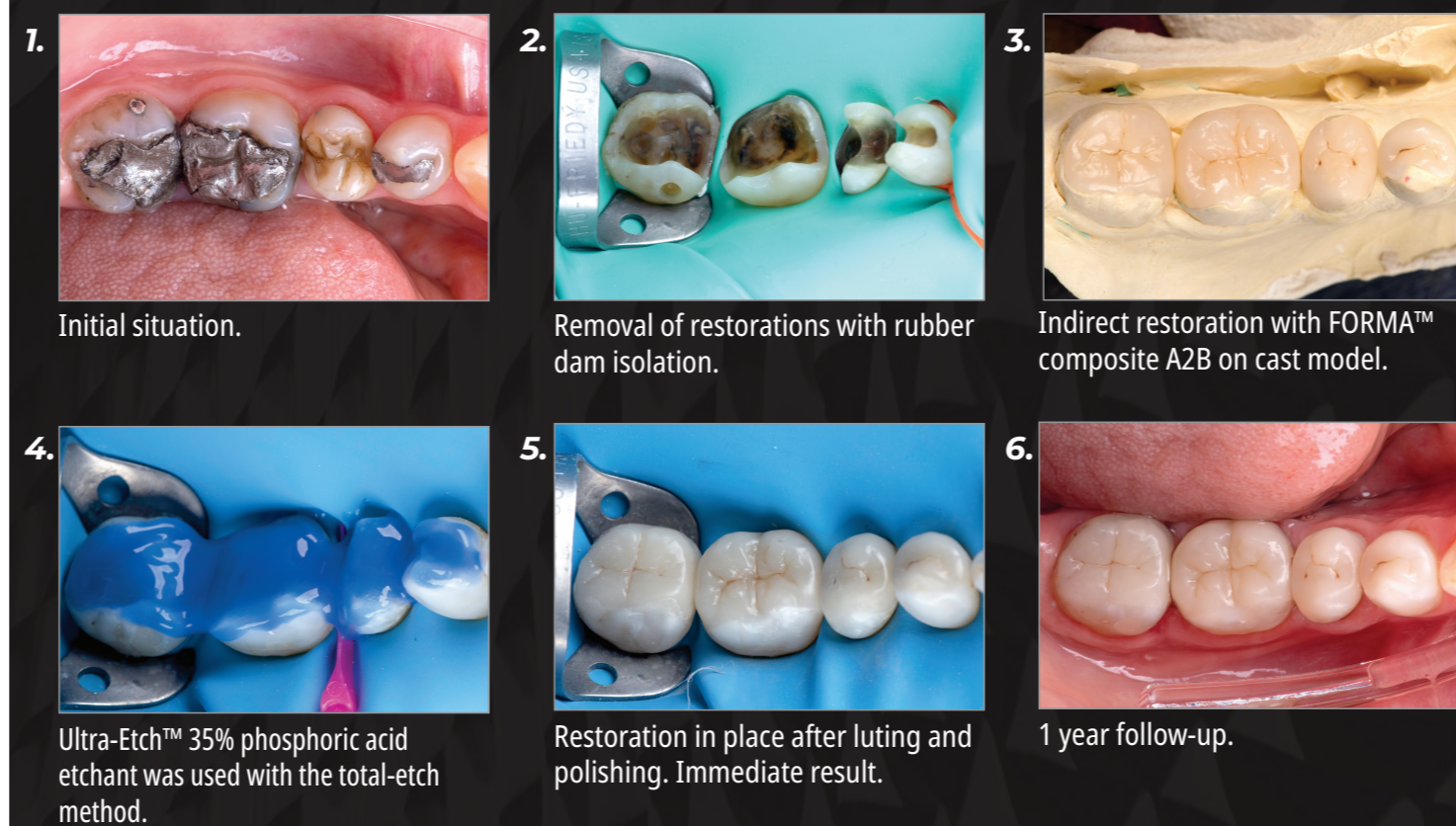
FORMA™ composite enamel bleach shade XWE used.

Final Result after polishing with Jiffy™ Composite Polishing Disks (yellow & white), followed by Jiffy™ Goat Hair Brush with Ultradent™ Diamond Polish Mint paste.



DR. GUSTAVO PETRIS

Indirect Posterior Onlay



Initial situation.

Removal of restorations with rubber dam isolation.

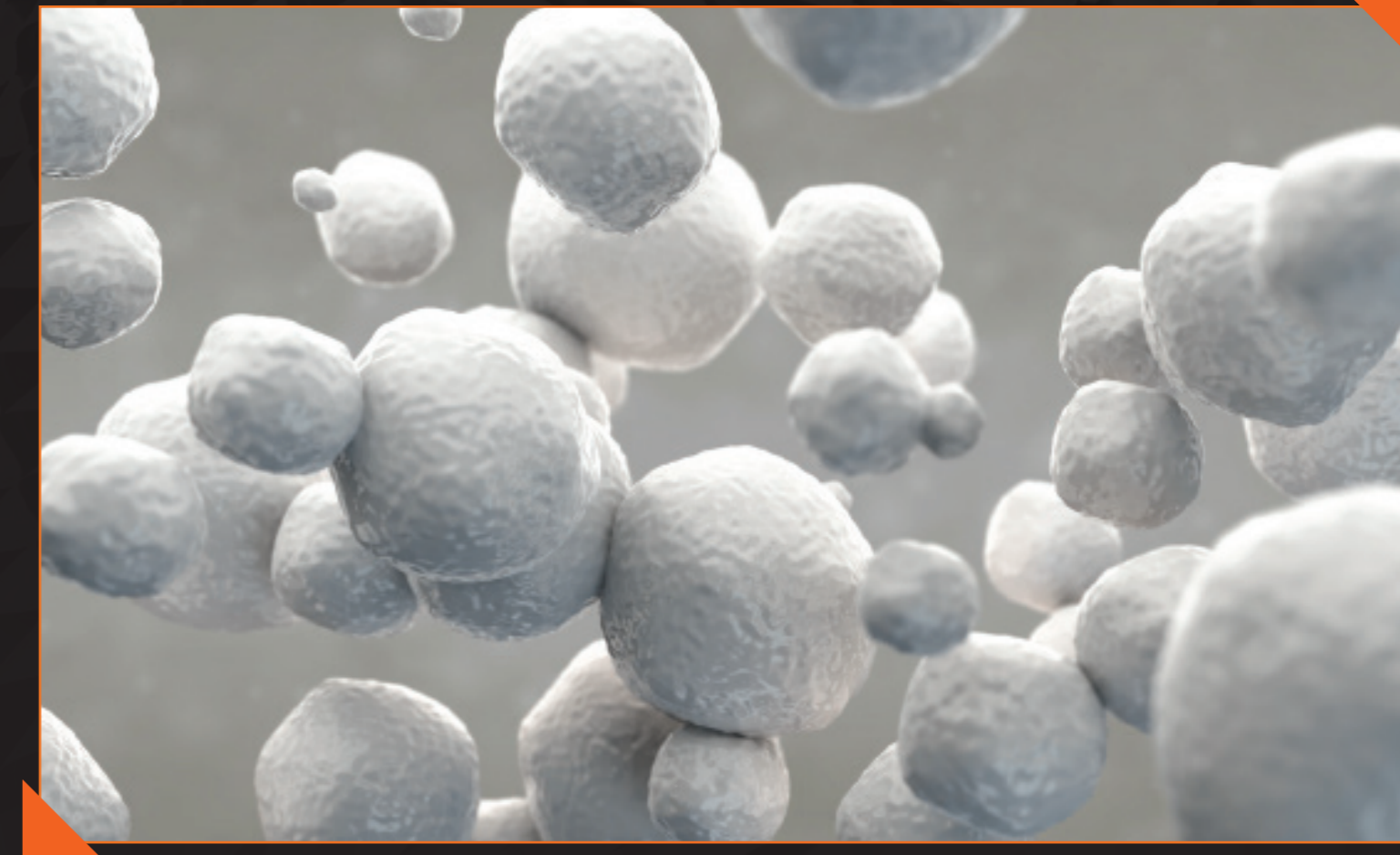
Indirect restoration with FORMA™ composite A2B on cast model.

Ultra-Etch™ 35% phosphoric acid etchant was used with the total-etch method.

Restoration in place after luting and polishing. Immediate result.

1 year follow-up.

Proprietary Zirconia Particle Technology



FORMA™ composite features a zirconia nano-hybrid formula that allows for excellent working consistency. Its zirconia particles provide a beautiful high gloss finish and enhanced gloss retention.



DR. NEWTON FAHL

FORMA™ composite offers a wide range of layering options to solve from the simplest to the most polychromatic cases, and its consistency allows precise modeling of each layer.



DR. RAFAEL CALIXTO

FORMA™ composite allows management of various opacities to reproduce different dental characteristics, both in simple and advanced restorations.



DR. RAFAEL BEOLCHI

FORMA™ composite demonstrates a working consistency that facilitates both the sculpting of anatomical details in posterior teeth and control over the thickness of the layers of resin in anterior teeth, essential for aesthetic restorations.